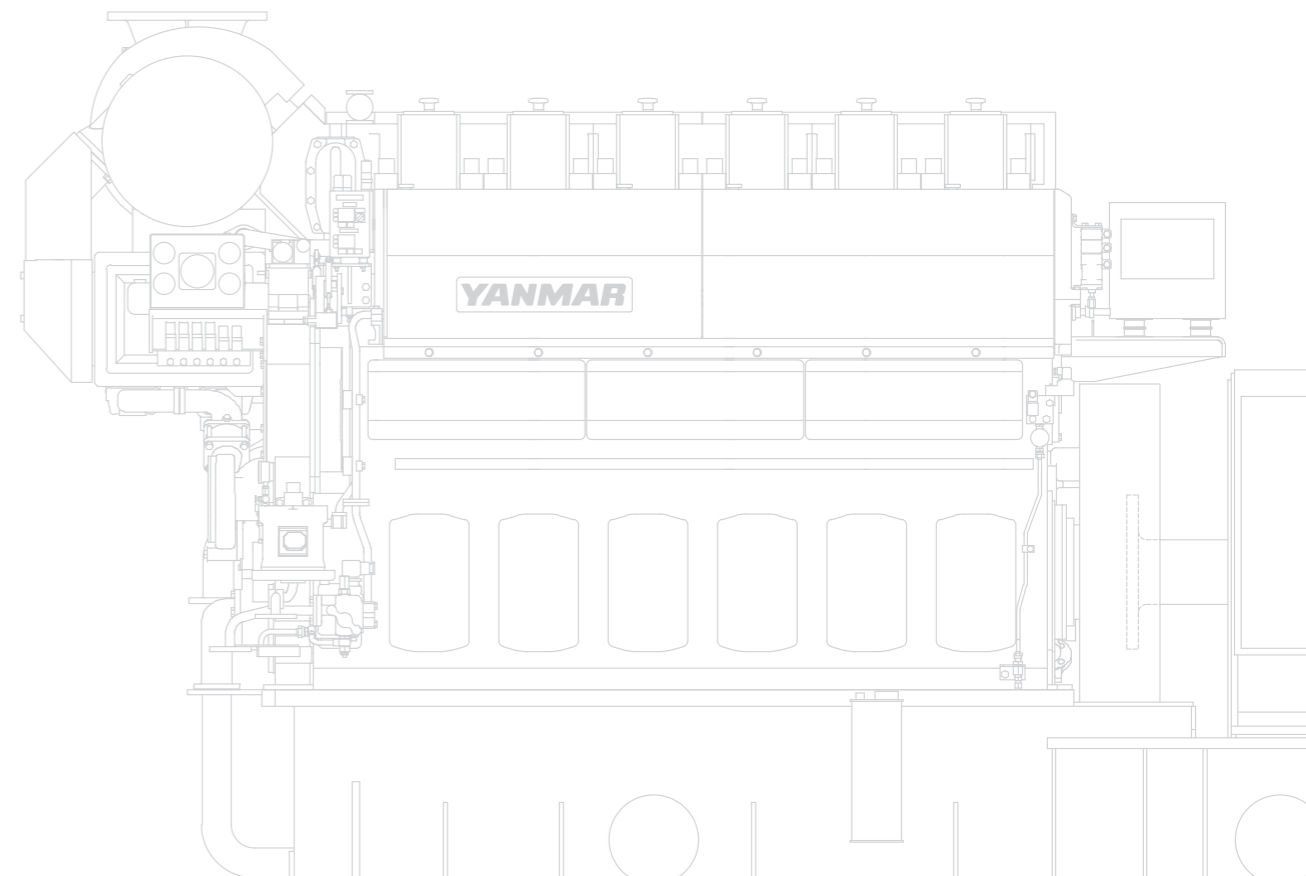




MARINE DIESEL ENGINE

Marine Propulsion Power Range [374~4500kW]
Marine Auxiliary Generator Capacity [180~4600kWe]

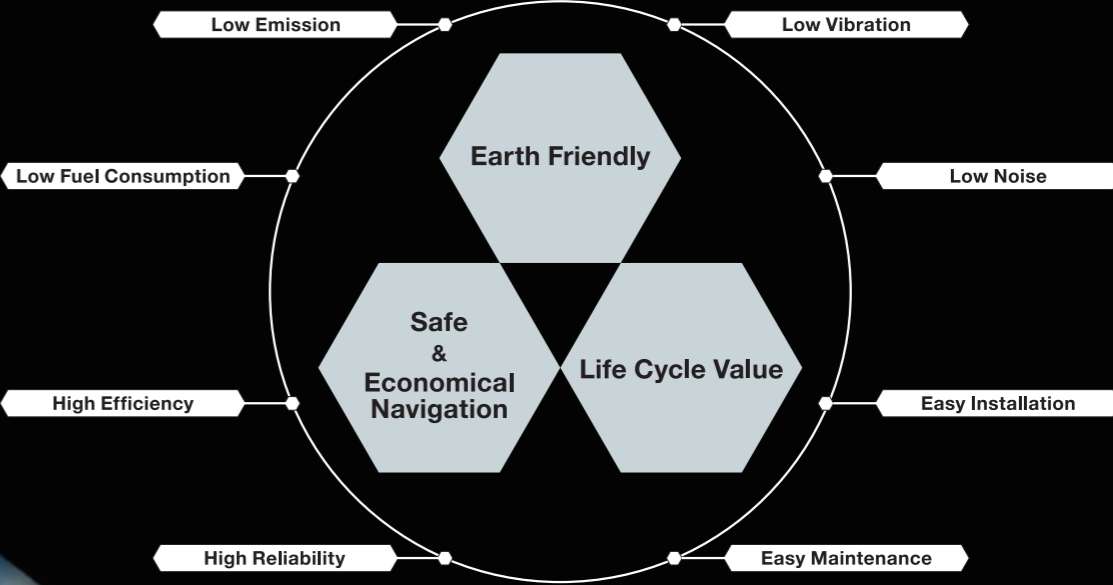


YANMAR CO., LTD.
Power Solution Business.

1-1-1, Nagasu-Higashidori, Amagasaki, Hyogo, Japan
TEL: +81-6-6489-8069 FAX: +81-6-6489-1082

yanmar.com/global/

A SUSTAINABLE FUTURE

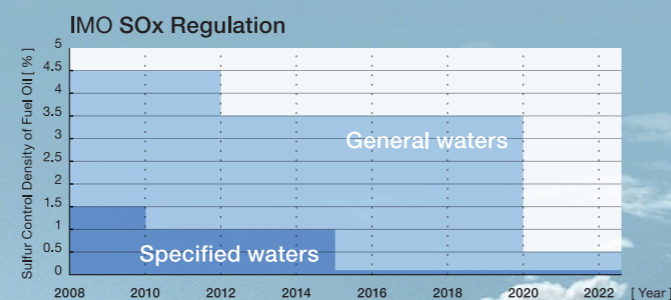
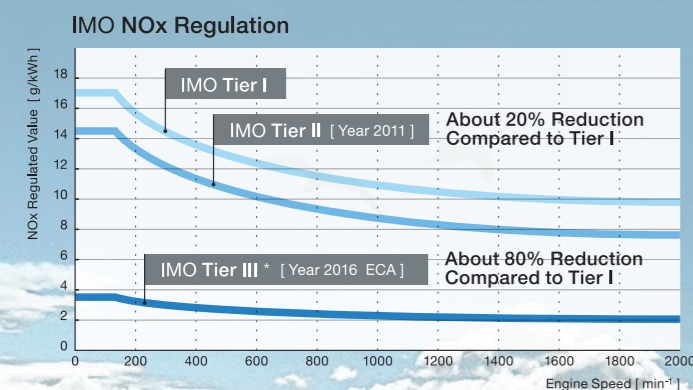


CONTENTS

- 4P > Environmental Performance
- 6P > Marine Propulsion Diesel Engine
- 10P > Marine Auxiliary Diesel Engine
- 14P > Amagasaki Plant
- 15P > History
- 16P > Worldwide Service Network

With respect for nature, YANMAR will be your reliable partner for a long voyage.

We will keep close communication with our customers once we deliver our products, in addition to development and production of our wide range of marine engines. we promote " Life Cycle Value " to our customers for their comfortable and safe voyage over a long period of time. while we pursue many possible ways to achieve low engine costs and to be in harmony with the environment, we strive to provide the best possible solution for our customers.



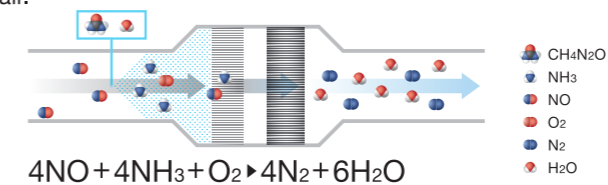
* Tier II is applied in general waters
 ECA = Emission Control Area
 IMO = International Maritime Organization
 NOx = Nitrogen Oxides
 SOx = Sulfur Oxides

We separately adopt the exhaust gas selective catalytic reduction system in compliance with the new environmental regulations, IMO Tier III.

SCR System

■ SCR System : How it works

Urea solution safe to be used is injected into exhaust gas. By this, the generated ammonia reacts with NOx through catalyst, resulting in nontoxic nitrogen and water being discharged into open air.

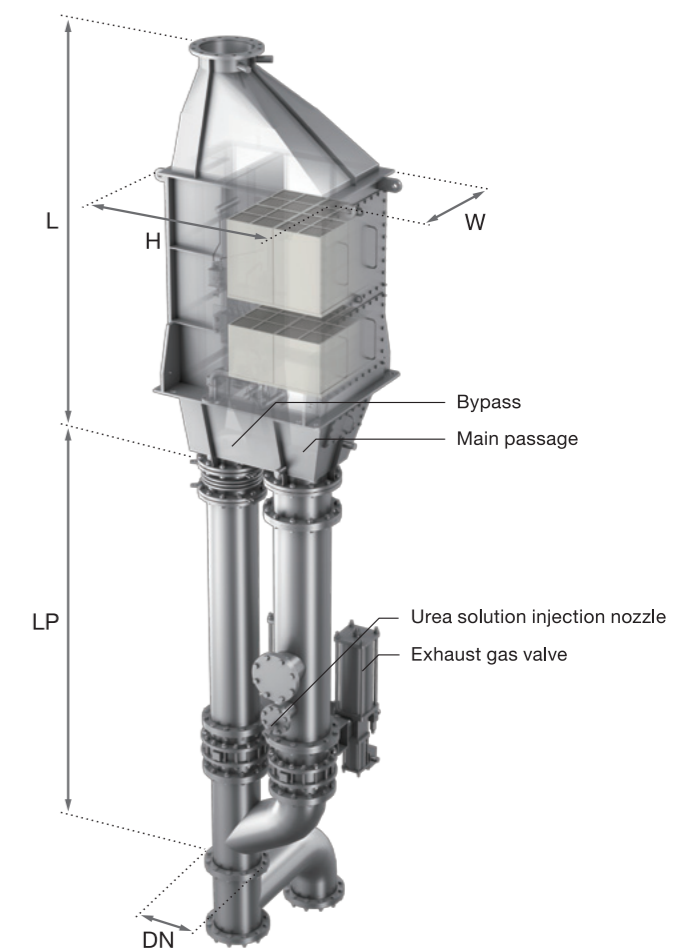


■ Compact Design : Unified catalyst line and bypass

Dimension

SCR model	Catalytic Reactor [mm]			Exhaust Pipe [mm]		Tier III Engine Model
	H	W	L	DN	LP	
Y155SCR-L	1080	750	2530	250A	2760	6AYLS
Y16SCR-L	1080	750	2230	250A	2560	6NY16LWS
	1080	750	2380	250A	2560	
Y165SCR-L	1140	750	2600	300A	2530	6N165LWS
	1140	750	2750	300A	2530	
Y18SCR-IAJL	1140	750	2600	300A	2930	6EY18IAJLWS
	1140	750	2750	300A	2930	
Y22SCR-IAJL	1480	1100	2770	400A	3620	6EY22IAJLWS
	1480	1100	2920	400A	3620	
Y26SCR-6L	1700	1430	3490	500A	4300	6EY26LWS
	1920	1430	3360	550A	4300	
Y26SCR-8L	1920	1430	3510	550A	4300	8EY26LWS
	2080	1750	3850	650A	5120	
Y33SCR-6L	2080	1750	3850	650A	5120	6EY33LWS
Y33SCR-8L	2430	1760	3900	750A	6100	8EY33LWS

Feel free to contact for detailed informations on dimensions, etc.



YANMAR EcoDiesel is addressing the stricter IMO Tier II regulation NOx limits with improvements to combustion technologies of engine.

ASSIGN Combustion System

■ Staggered Layout Multi-Hole Nozzle

By staggering the layout and using multiple injection holes, this design achieves sufficient total injection area and improves air utilization.

■ Air Flow Motion

The optimally shaped air intake port generates a suitable swirl (vortex flow) in the combustion chamber as well as a squish in the compression stroke. This promotes fuel / air mixing, improving combustion efficiency.

High Pressure Miller Cycle System

■ Miller Type Cam

By finishing the intake stroke earlier, the intake air expands and temperature in the cylinder decreases, and by reducing air temperature before combustion in the next compression stroke, the NOx emission is reduced.

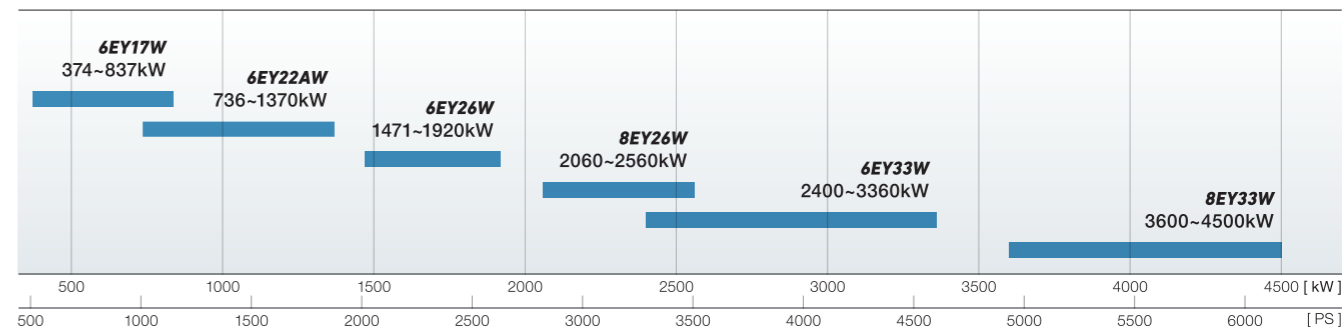
■ High Pressure Ratio Turbocharger

Increasing the intake pressure by high pressure ratio turbocharger during the short intake stroke ensures the quantity of charged air and fixes the cylinder pressure to restrain the increase of the specific fuel consumption.



MARINE PROPULSION DIESEL ENGINE LINE-UP

Power Range

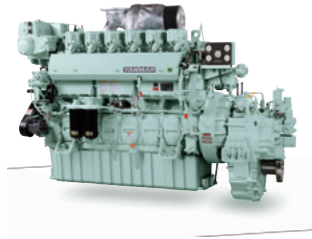


Series	Models	Output [kW]							Gear	Dimensions [mm]														
		Engine Speed [min ⁻¹] * 850min ⁻¹								A					B									
		620	750	800	900	1350	1450	1500		A	A1	A2	A3	B	C	D	E	F	G					
6EY17W	6EY17W				374				YXH-500	2908	2410	2154	615	1305	1813	620	682	349	1300					
					480			794		862			429											
					590			615		682			349											
				749	837			794		862			429											
6EY22AW	6EY22AW		736					YX-1000	4574	3647	2965	1488	1548	2326	666	885	435	1922						
									1601			450				-								
				885					1488			885				435								
									1601			450				-								
									1517			885				435								
				1030					1550			450				-								
									1807			1145				590								
						1180						1957				555	-							
				1330																				
				1370																				
6EY26W	6EY26W				1471			YXH-2000M	5702	4271	3563	1882	1804	3112	842	1145	590	1900						
									2322			555				-								
									1882			1145				590								
									2070			555				-								
									1890			1145				590								
									2320			555				-								
									1890			1145				590								
									2070			555				-								
8EY26W	8EY26W							YX-3500M	6912	5090	5022	1890	2085	3257	842	1427	777	1900						
									2459			730				80								
									1814			3542				1127	1427		777					
									1876			2845				430	730		80					
									1903			3257				842	1427		777					
									2472			730				80								
									1827			3542				1127	1427		777					
									1889			2845				430	730		80					
6EY33W	6EY33W							-	-	5700	4520	-	2335	3695	1025	-	-	2372						
8EY33W	8EY33W							-	-	7125	5585	-	2555	4040	1025	-	-	2372						
6N21AW	6N21A-DW				662			Y-850	3920	2776	2733	1158	1420	2081	601	814	359	1802						
									1289			455				-								
	6N21A-UW				736			YX-1000	4053								1199					885	435	
									4086			1232				450	-							
	6N21A-SW	6N21A-EW				883			YX-1000			4059							1205				885	435
						956						4092				1238	450		-					

MARINE PROPULSION DIESEL ENGINE

6EY17W

Power : 374~837kW

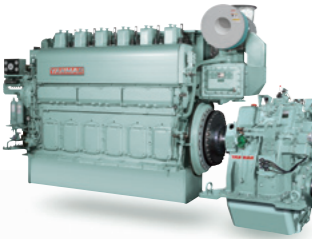


Engine Model	6EY17W				
No. of Cylinders	6				
Cylinder Bore×Stroke [mm]	170×230				
Rated Output [kW(PS)]	374(508)	480(653)	590(802)	749(1018)	837(1138)
Engine Speed [min ⁻¹]	1350				1450
Dry Weight [kg]	3880				
Propeller Type	for F.P.P.				
Marine Gear Model	Offset YXH-500 YXH-500L				
Reduction Gear Ratio (Ahead)	Offset 2.53, 3.04, 3.48 3.57, 4.07, 4.48, 4.96				
Marine Gear Dry Weight [kg]	Offset 700 1667				
Total Dry Weight with Marine Gear [kg]	Offset 4580 5547				

MARINE PROPULSION DIESEL ENGINE

6EY22AW

Power : 736~1370kW

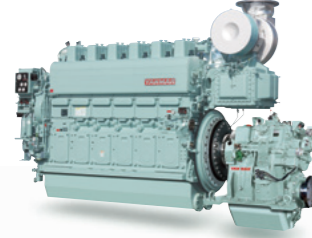


Engine Model	6EY22AW					
No. of Cylinders	6					
Cylinder Bore×Stroke [mm]	220×320					
Rated Output [kW(PS)]	736(1000)	885(1203)	1030(1400)	1180(1604)	1330(1808)	1370(1863)
Engine Speed [min ⁻¹]	800	850		900		
Dry Weight [kg]	10000					
Propeller Type	for F.P.P.					
Marine Gear Model	Offset YX-1000			YXH-2000		
	Co-Axial YX-1000C			YXH-2000C		
Reduction Gear Ratio (Ahead)	Offset 2.03, 2.36, 2.78, 3.32			2.23, 2.58, 2.79, 3.03		
	Co-Axial 2.03, 2.36, 2.78, 3.32			2.23, 2.58, 2.79, 3.03		
Marine Gear Dry Weight [kg]	Offset 2400			4750		
	Co-Axial 2565			5050		
Total Dry Weight with Marine Gear [kg]	Offset 12505		12556		14861	
	Co-Axial 12670		12721		15161	

MARINE PROPULSION DIESEL ENGINE

6EY26W

Power : 1471~1920kW



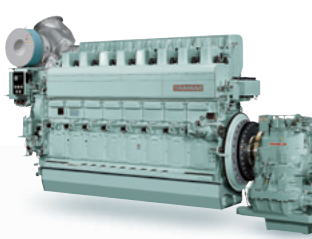
Engine Model	6EY26W					
No. of Cylinders	6					
Cylinder Bore×Stroke [mm]	260×385					
Rated Output [kW(PS)]	1471(2000)		1620(2203)		1920(2610)	
Engine Speed [min ⁻¹]	750					
Dry Weight [kg]	18500					
Propeller Type	for C.P.P.		for F.P.P.		for F.P.P.	
Marine Gear Model	Offset YXH-2000M		YXH-2000		YXH-2500M	
	Co-Axial YXH-2000MC		YXH-2000C		YXH-2500MC	
Reduction Gear Ratio (Ahead)	Offset 2.23, 2.58, 2.79, 3.03					
	Co-Axial 2.23, 2.58, 2.79, 3.03					
Marine Gear Dry Weight [kg]	Offset 3900		4750		4800	
	Co-Axial 4300		5050		5150	
Total Dry Weight with Marine Gear [kg]	Offset 22549		23349		23490	
	Co-Axial 22949		23649		23840	

This Photograph Shows Model 6EY26 [IMO Tier I]

MARINE PROPULSION DIESEL ENGINE

8EY26W

Power : 2060~2560kW



Engine Model	8EY26W							
No. of Cylinders	8							
Cylinder Bore×Stroke [mm]	260×385							
Rated Output [kW(PS)]	2060(2801)		2210(3005)		2360(3209)		2560(3481)	
Engine Speed [min ⁻¹]	750							
Dry Weight [kg]	24500							
Propeller Type	for C.P.P.		for F.P.P.		for C.P.P.		for F.P.P.	
Marine Gear Model	Offset YX-3500M		YX-3500		YX-3500M		YX-3500	
	Co-Axial YX-3500MC		YX-3500C		YX-3500MC		YX-3500C	
Reduction Gear Ratio (Ahead)	Offset 2.55, 2.80, 3.09, 3.31							
	Co-Axial 2.31, 2.54, 2.80, 3.00							
Marine Gear Dry Weight [kg]	Offset 8700		9400		8700		9400	
	Co-Axial 8400		9100		8400		9100	
Total Dry Weight with Marine Gear [kg]	Offset 33428		34128		33428		34185	
	Co-Axial 33128		33828		33128		33885	

MARINE PROPULSION DIESEL ENGINE

6EY33W

Power : 2500~3360kW



Engine Model	6EY33W			
No. of Cylinders	6			
Cylinder Bore×Stroke [mm]	330×440			
Rated Output [kW(PS)]	2500(3399)	2750(3739)	3100(4215)	3360(4568)
Engine Speed [min ⁻¹]	750			
Dry Weight [kg]	39100			
Propeller Type	-			
Marine Gear Model	Offset Co-Axial -			
Reduction Gear Ratio (Ahead)	Offset Co-Axial -			
Marine Gear Dry Weight [kg]	Offset Co-Axial -			
Total Dry Weight with Marine Gear [kg]	Offset Co-Axial -			

MARINE PROPULSION DIESEL ENGINE

8EY33W

Power : 3600~4500kW



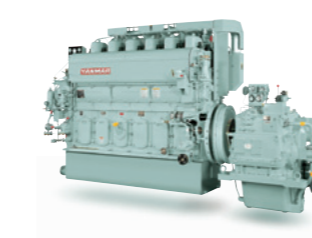
Engine Model	8EY33W		
No. of Cylinders	8		
Cylinder Bore×Stroke [mm]	330×440		
Rated Output [kW(PS)]	3600(4895)	4000(5438)	4500(6118)
Engine Speed [min ⁻¹]	750		
Dry Weight [kg]	50900		
Propeller Type	-		
Marine Gear Model	Offset Co-Axial -		
Reduction Gear Ratio (Ahead)	Offset Co-Axial -		
Marine Gear Dry Weight [kg]	Offset Co-Axial -		
Total Dry Weight with Marine Gear [kg]	Offset Co-Axial -		

This Photograph Shows Model 8EY33W

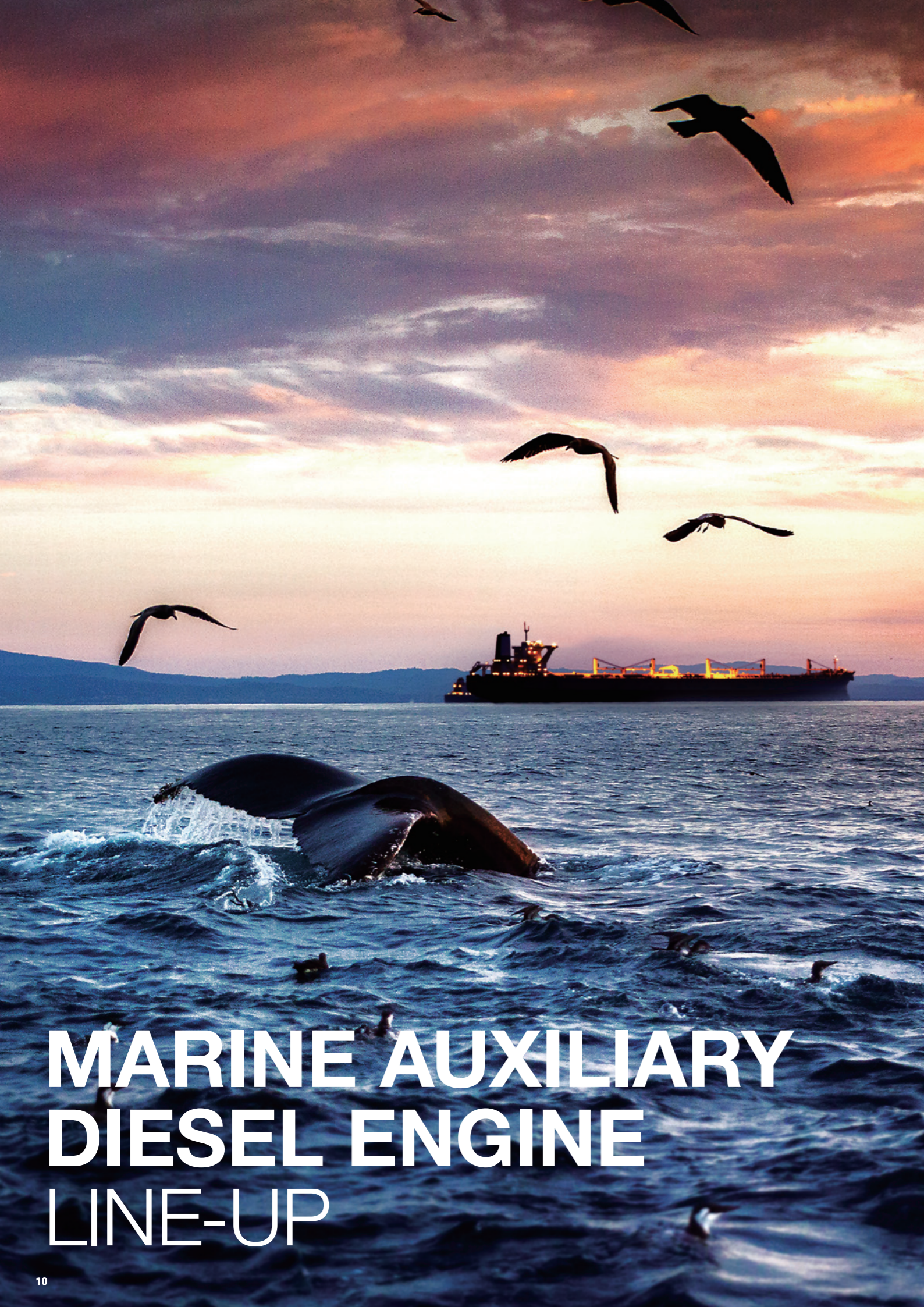
MARINE PROPULSION DIESEL ENGINE

6N21AW

Power : 662~956kW



Engine Model	6N21A-DW	6N21A-UW	6N21A-SW	6N21A-EW
No. of Cylinders	6			
Cylinder Bore×Stroke [mm]	210×290			
Rated Output [kW(PS)]	662(900)	736(1000)	883(1200)	956(1300)
Engine Speed [min ⁻¹]	800		850	
Dry Weight [kg]	8000			
Propeller Type	for F.P.P.			
Marine Gear Model	Offset Y-850		YX-1000	
	Co-Axial YC-850		YX-1000C	
Reduction Gear Ratio (Ahead)	Offset 1.84, 2.07, 2.35, 2.68		2.03, 2.36, 2.78, 3.32	
	Co-Axial 1.84, 2.07, 2.35, 2.68		2.03, 2.36, 2.78, 3.32	
Marine Gear Dry Weight [kg]	Offset 2050		2400	
	Co-Axial 2150		2565	
Total Dry Weight with Marine Gear [kg]	Offset 10128		10478	
	Co-Axial 10228		10643	



MARINE AUXILIARY DIESEL ENGINE LINE-UP

Generator Capacity

Fuel Oil : M.D.O / H.F.O (up to 700mm²/s / 50°C)



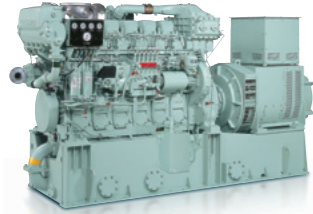
Series	Models	Output [kW]					Dimensions [mm]								
		Engine Speed [min ⁻¹]					G: Minimum Height for Removing Piston								
		720	750	900	1000	1200	A	A2	B	C	D	E	F	G	
6NY16LW	6NY16L-HW				200	265	3097								
	6NY16L-DW				245	310	3097								
	6NY16L-UW				270	355	3117	1972	1265	1813	2530	940	800	1983	
	6NY16L-SW				310	400	3112								
	6NY16L-EW				353	441	3172								
6N165LW	6N165L-UW				353	441	3182	1982	1341		2700				
	6N165L-SW				397	485	3332	2012	1557	1999	2800	990	800	2105	
	6N165L-EW				397				1341						
					441	530			1341						
6EY18LW	6EY18LW	400~615					4441	2751	1493	2255	3620	1070	915	2564	
6EY18ALW	6EY18ALW	455~615					4391	2751	1489	2255	3620	1070	915	2564	
		660~800					4680				3720				
6EY22LW	6EY22LW	660~1080					5452	3337	1678	2630	4120	1180	985	2907	
6EY22ALW	6EY22ALW	880~1370					5647	3337	1782	2675	4310	1180	985	2907	
6EY26LW	6EY26LW	1400~1620					6474	3974	1847	3520	5270	1420	1250	3150	
		1730~1840					6774								
8EY26LW	8EY26LW	1900~2130					8258				6720				
		2245					8358	5290	2030	3665	6800	1420	1250	3150	
		2450					8418				6840				
6EY33LW	6EY33LW	2400~3600					8950	5280	2355	3895	7130	1780	1370	3742	
8EY33LW	8EY33LW	4000~4800					10640	6655	2555	4470	7950	1780	1620	3992	

The dimensions for the diesel engine generator sets are simply reference values. The values may differ for different generator manufacturers.

MARINE AUXILIARY DIESEL ENGINE

6NY16LW

Generator Capacity :
180~400kWe

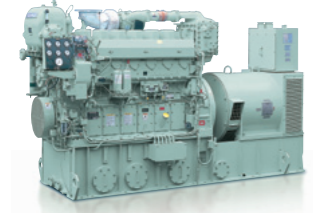


Engine Model	6NY16L-HW										
No. of Cylinders	6										
Cylinder Bore×Stroke [mm]	160×200										
Rated Output [kW(PS)]	200 (272)	265 (360)	245 (333)	310 (421)	270 (367)	355 (483)	310 (421)	400 (544)	353 (480)	441 (600)	
Generator Capacity [kWe]	180	240	220	280	240	320	280	360	320	400	
Engine Speed [min ⁻¹]	1000	1200	1000	1200	1000	1200	1000	1200	1000	1200	
Dry Weight [kg]	2880										
Total Weight (Gen. Set) [kg]	5870										

MARINE AUXILIARY DIESEL ENGINE

6N165LW

Generator Capacity :
320~480kWe



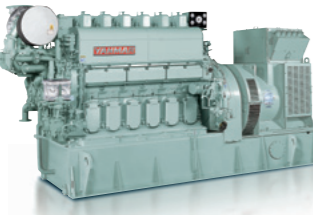
Engine Model	6N165L-UW				6N165L-SW				6N165L-EW			
No. of Cylinders	6											
Cylinder Bore×Stroke [mm]	165×232											
Rated Output [kW(PS)]	353 (480)	441 (600)	353 (480)	397 (540)	485 (660)	397 (540)	441 (600)	530 (720)				
Generator Capacity [kWe]	320	400	320	360	450	360	400	480				
Engine Speed [min ⁻¹]	1000	1200	900	1000	1200	900	1000	1200				
Dry Weight [kg]	4100											
Total Weight (Gen. Set) [kg]	6410				7160							

• 1000min⁻¹ : for MDO Application Only. • 900min⁻¹ : for HFO Application Only. This Photograph Shows Model 6N165L [IMO Tier I]

MARINE AUXILIARY DIESEL ENGINE

6EY18[A]LW

Generator Capacity :
360~750kWe



Engine Model	6EY18LW													6EY18ALW												
No. of Cylinders	6																									
Cylinder Bore×Stroke [mm]	180×280																									
Rated Output [kW(PS)]	400 (544)	450 (612)	500 (680)	550 (748)	615 (836)	455 (619)	500 (680)	550 (748)	615 (836)	660 (897)	680 (925)	745 (1013)	800 (1088)													
Generator Capacity [kWe]	360	400	450	500	560	400	450	500	560	600	620	680	750													
Engine Speed [min ⁻¹]	720/750													900/1000												
Dry Weight [kg]	6600																									
Total Weight (Gen. Set) [kg]	11200													12100												

MARINE AUXILIARY DIESEL ENGINE

6EY22[A]LW

Generator Capacity :
600~1300kWe



Engine Model	6EY22LW													6EY22ALW												
No. of Cylinders	6																									
Cylinder Bore×Stroke [mm]	220×320																									
Rated Output [kW(PS)]	660 (897)	745 (1013)	800 (1088)	880 (1197)	970 (1319)	1080 (1468)	880 (1197)	970 (1319)	1020 (1387)	1100 (1496)	1180 (1604)	1300 (1768)	1370 (1863)													
Generator Capacity [kWe]	600	680	740	800	900	1020	800	900	950	1000	1100	1200	1300													
Engine Speed [min ⁻¹]	720/750													900/1000												
Dry Weight [kg]	11200													10500												
Total Weight (Gen. Set) [kg]	18500													18100												

MARINE AUXILIARY DIESEL ENGINE

6EY26LW

Generator Capacity :
1300~1720kWe



Engine Model	6EY26LW							
No. of Cylinders	6							
Cylinder Bore×Stroke [mm]	260×385							
Rated Output [kW(PS)]	1400 (1903)	1620 (2203)	1730 (2352)	1840 (2502)				
Generator Capacity [kWe]	1300	1500	1600	1720				
Engine Speed [min ⁻¹]	720/750							
Dry Weight [kg]	18500							
Total Weight (Gen. Set) [kg]	29800				30600			

MARINE AUXILIARY DIESEL ENGINE

8EY26LW

Generator Capacity :
1800~2300kWe



Engine Model	8EY26LW									
No. of Cylinders	8									
Cylinder Bore×Stroke [mm]	260×385									
Rated Output [kW(PS)]	1900 (2583)	2030 (2760)	2130 (2896)	2245 (3052)	2450 (3331)					
Generator Capacity [kWe]	1800	1900	2000	2100	2300					
Engine Speed [min ⁻¹]	720/750									
Dry Weight [kg]	24500									
Total Weight (Gen. Set) [kg]	40000					40200			45000	

MARINE AUXILIARY DIESEL ENGINE

6EY33LW

Generator Capacity :
2250~3400kWe



Engine Model	6EY33LW									
No. of Cylinders	6									
Cylinder Bore×Stroke [mm]	330×440									
Rated Output [kW(PS)]	2400 (3263)	2750 (3739)	3000 (4079)	3360 (4568)	3600 (4895)					
Generator Capacity [kWe]	2250	2550	2800	3200	3400					
Engine Speed [min ⁻¹]	720/750									
Dry Weight [kg]	38500									
Total Weight (Gen. Set) [kg]	63000									

MARINE AUXILIARY DIESEL ENGINE

8EY33LW

Generator Capacity :
3750~4600kWe



Engine Model	8EY33LW									
No. of Cylinders	8									
Cylinder Bore×Stroke [mm]	330×440									
Rated Output [kW(PS)]	4000 (5438)	4500 (6118)	4800 (6526)							
Generator Capacity [kWe]	3750	4300	4600							
Engine Speed [min ⁻¹]	720/750									
Dry Weight [kg]	50900									
Total Weight (Gen. Set) [kg]	90200									

POWER SOLUTION BUSINESS AMAGASAKI PLANT

Amagasaki factory started in 1936 as world's first factory to produce small sized diesel engines. Today, the factory mass produces large-sized diesel engines for marine and generator use, and also produces diesel and gas engines for land use and general power source. From 1983, the factory also produces gas turbines, and continues to produce high quality products ever since.



Highly quality and efficient production system

Amagasaki factory uses its unique, high performance devices and advanced machines for automatic and laborsaving operation. Furthermore, a suitable order-entry system matching each product is applied and controlled with an accurate quality management system. Therefore, we are able to produce highly reliable products to customers. YANMAR is the only company that produces the entire engine integrally within one factory.



Certifications of 11 major shipping classification societies

11 major ship certifications

The Amagasaki Plant has been certified by the world's 11 major ship classification societies. Its voluntary inspection program was certified by the 11 ship classification societies for the first time in the world

- | | |
|--|---|
| NK [Nippon Kaiji Kyokai] | KR [Korean Register of Shipping] |
| ABS [American Bureau of Shipping] | CCS [China Classification Society] |
| LR [Lloyd's Register of Shipping] | GL [Germanischer Lloyd] |
| DNV [Det Norske Veritas] | IRS [Indian Register of Shipping] |
| RINA [Registro Italiano Navale] | RS [Russian Maritime Register of Shipping] |
| BV [Bureau Veritas] | |



Research and development with advanced technology

YANMAR continues to research and develop environmental-friendly technology in a higher degree, such as developing cleaner emission gas, low fuel consumption, and less vibration and noise, based on our unique engine technology.



*1) ISO 9001: International Quality Control System Standard of the International Standardization Organization, (Certification No. 912208)
*2) ISO 14001: International Environmental Management System Standard of the International Standardization Organization, (Certification No. 770250)

Internationally Certified Quality Control and Environmental Response

In July 1992, Power Solution Business was certified under ISO 9001*1 by a certification authority in England, Lloyd's Register Quality Assurance Limited (LRQA). And in June 1997 under ISO 14001*2 for the first time as a plant producing large land and marine diesel engines. In addition, we also met IMO emissions control regulations (with NOx emission values) (Tier I in 2000 and Tier II in 2011) for the first time as a Japanese engine manufacturer. Our advanced technological capabilities for environmental conservation are highly recognized worldwide.

HISTORY

1912

- Founded as Yamaoka Hatsudoki Kosakusho.

1936

- Founded as Yamaoka Nainenki (internal combustion engine) Company Ltd. with 3 million yen on a 40,000m² site in Nagasu Oda-mura, Kawabe-gun, Hyogo Pref. Manufactured diesel engines together with Yamaoka Hatsudohki Kosakusho (engine mfg.) Co., Ltd.

1952

- Name changed to Yanmar Diesel Engine Co., Ltd.

1968

- Awarded Deming Prize for pursuing distinguished quality control.



1978

- Plant certified by ABS (American Bureau of Shipping) and LR (Lloyd's Register of Shipping), becoming the first plant in Japan to be so honored by the major ship classification organizations of Japan, U.K. and U.S.A., the major marine transportation countries of the world.

1984

- Plant certified by NV (Det Norske Veritas).

1991

- Production level of large-sized engines reached 100,000 units.
- Plant certified by RINA (Registro Italiano Navale).

1992

- Certified by LRQA (Lloyd's Register Quality Assurance) for ISO9001 Quality Assurance System.

1997

- Certified under ISO14001 (International Standard for Environmental Management System) by LRQA in June, first among Japanese engine manufacturers.

1998

- Three series of Yanmar marine engines certified first in Japan by IMO (International Maritime Organization) for complying with its NOx emissions in regulations.



1999

- Our new products of diesel engine " SAVETEN " series which advance of low NOx and low fuel oil consumption are on the commercial.

2002

- The Name of the company changed to YANMAR Co., Ltd.

2005

- Received supervision for approved factories by BV (Bureau Veritas).

2006

- The Large Power Products Operations Business celebrated its 70th anniversary.

2007

- Completion of the Amagasaki Plant Development Laboratory, aimed at strengthening emissions standards and systems for developing new products as well as strengthening systems for producing large-sized products.

2008

- Received supervision for approved factories by KR (Korean Register of Shipping).

2009

- Received supervision for approved factories by CCS (China Classification Society).
- The 6EY18 engine model received a certificate from IMO (International Maritime Organization) for NOx Tier II standards that will be applicable from 2011, making Yanmar the first domestic ship engine manufacturer to receive the certificate.
- Received a designation for approved factories by GL (Germanischer Lloyd).



2010

- Released Model 6EY22.



2012

- YANMAR celebrated the 100th anniversary of its founding.
- Received a designation for approved factories by IRS (Indian Register of Shipping).
- Released Model 6EY17.



2013

- Received a designation for approved factories by RS (Russian Maritime Register of Shipping).

2014

- Released Model 6EYG26L.

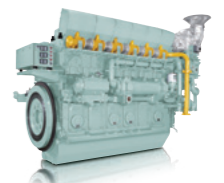
2015

- Released Model 6EY33.
- Released SCR for Model 6EY26.

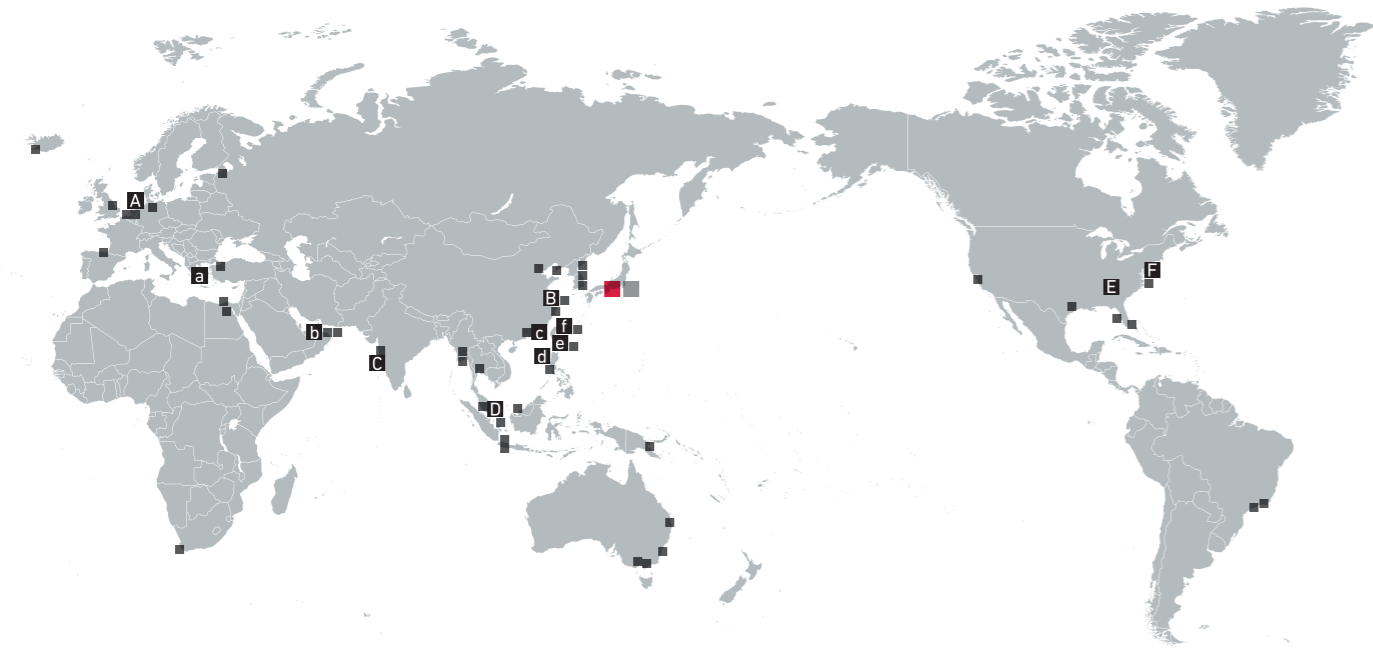


2016

- Released Model 6EY26DF



WORLDWIDE SERVICE NETWORK



EUROPE

NETHERLANDS COUNTRY CODE * 31 *

A YANMAR EUROPE B.V. (YEU)
Brugplein 11, 1332 BS Almere-de Vaart, The Netherlands
TEL: 36-5493200 FAX: 36-5493209
WEB: yanmar.eu/

NICOVERKEN HOLLAND B.V.
Algerastraat 20, 3125 BS Schiedam, The Netherlands
TEL: 10-2380999 FAX: 10-2380990
E-MAIL: shiprepair@nicoverken.nl
WEB: www.nicoverken.nl

FUJI TRADING (MARINE) B.V.
Kortenoord 2-8 3087 AR Rotterdam, The Netherlands
TEL: 10-429-8833 FAX: 10-429-5227

GREECE COUNTRY CODE * 30 *

a YANMAR ENGINEERING CO.,LTD. GREECE LIAISON OFFICE
5th FL.,130 Sygrou Avenue., Athens, Greece
TEL: 210-922-2481 FAX: 210-922-2484
E-MAIL: yanmargr@tee.gr / yanmar@weboffice.gr

U.K. COUNTRY CODE * 44 *

SHIPAID DIESEL SERVICES LTD
Units, 1&2, Plot 10, Westminster Trading Estate,
Westminster Road, North Hykeham, Lincoln, LN6 3QY, U.K.
TEL: 1522-696642 FAX: 1522-695153

GERMANY COUNTRY CODE * 49 *

NIPPON DIESEL SERVICE
Herman-Blohm-Strasse 1 D-20457 Hamburg, Germany
TEL: 40-3177100 FAX: 40-311598

ICELAND COUNTRY CODE * 354 *

MARAS E.H.F
Akraftind 2 201 Kópavogur Iceland
TEL: 555-6444 FAX: 565-7230
E-MAIL: maras@maras.is

RUSSIA COUNTRY CODE * 7 *

ELITE INTERCONTINENTAL SHIPPING
1 Gapsalskaya 709, Area Code 198035, St.Petersburg, Russia
TEL: 911-916-9495(24/7)/812-680-1713
FAX: 812-680-1702
E-MAIL: yanmar@elit-engine.ru
WEB: www.elit-engine.ru

SPAIN COUNTRY CODE * 34 *

SKANDIAVERKEN, S.L.
Pol. Torrelarragoiti Parcela P7M, Pabellón 1 y 2, 48170
Zamudio Bizkaia Spain
TEL: 94-452-0816 FAX: 94-452-0510
E-MAIL: skv@skvbermeo.com

TURKEY COUNTRY CODE * 90 *

SAKURA MARINE DENIZ ENDÜSTRISI VE DIŞ TIC.LTD.ŞTİ.
Istanbul Deri OSB, Kazlıçeşme Cad. No.22 X-5
Tuzla, Istanbul, Türkiye
TEL: +90 21-6494-4923
E-MAIL: info@sakura-marine.com
WEB: www.sakura-marine.com

MIDDLE EAST

U.A.E. COUNTRY CODE * 971 *

b YANMAR ENGINEERING CO., LTD. DUBAI LIAISON OFFICE
Gold&Diamond Park, Manufacturing Office 3006,
Ground Floor Building-3, Sheikh Zayed Road
P.O. Box 214831, Dubai, U.A.E.
TEL: 4-341-8787 FAX: 4-341-8778
E-MAIL: ymrdubai@eim.ae

ALBWARDY MARINE ENGINEERING (L.L.C)
Al Jadaf Ship Docking Yard P.O.Box 6515, Dubai, U.A.E.
TEL: 4-324-1001, 324-1561 FAX: 4-324-1005
WEB: www.albwardymarine.com

GOLTENS CO. LTD. DUBAI BRANCH
Al Jadaf Ship Docking Yard P.O. Box 2811, Dubai, U.A.E.
TEL: 4-324-1642 FAX: 4-324-1963
WEB: www.goltens.com

ARAB REPUBLIC OF EGYPT COUNTRY CODE * 20 *

MAPSO
P.O. Box 2643, 44 Industrial Area,
Cairo/Ismailia Desert Road, Cairo, Egypt
TEL: 2-2962777 FAX: 2-2962780
E-MAIL: mapso@soficom.com.eg

MAPSO-ALEXANDRIA OFFICE
5 Ahmed Orabi Street Alexandria, Egypt
TEL: 3-487-3453 FAX: 3-487-3486

AFRICA

SOUTH AFRICA COUNTRY CODE * 27 *

SEASCAPE MARINE SERVICES (PTY) LTD.
124 Service Road Marine Drive Paarden Eiland 7405,
P.O. Box 63 Paarden Eiland 7420 South Africa
TEL: 21-511-8201 FAX: 21-510-6947

OCEANIA

AUSTRALIA COUNTRY CODE * 61 *

FOGACS CAIRNCROSS DOCKYARD PTY LTD.
Thynne Road, Morningside, Brisbane,
Queensland, Australia 4170
TEL: 7-322-70856 FAX: 7-3399-6164

WATERSIDE ENGINEERING PTY LTD.
48-50 Export Drive, Brooklyn 3025, Victoria Australia
TEL: 3-9314-3722 FAX: 3-9314-3799
E-MAIL: waterside@waterside-eng.com

JAITCO
10199 Kurraba Road, Neutral Bay, N.S.W. 2089, Australia
TEL: +81-89-956-8927 FAX: +81-89-956-8927

JAPAN MARINE ENGINEERING CO.,LTD
475 Warrigal Road Moorabbin Victoria Australia 3189
TEL: 3-9555-5277 FAX: 3-9555-5344
E-MAIL: sales@jmeaust.com.au

PAPUA NEW GUINEA COUNTRY CODE * 675 *

LUTHERAN SHIPPING
P.O. Box 1459 Lae, Papua New Guinea
TEL: 42-6190 FAX: 42-5806
TELEX: NE 44172

ASIA

JAPAN COUNTRY CODE * 81 *

■ YANMAR CO., LTD.
■ YANMAR (HEAD OFFICE)
YANMAR FLYING-Y BUILDING, 1-32,
Chayamachi, Kita-ku, Osaka, 530-8311, Japan
WEB: yanmar.com
■ YANMAR (TOKYO) OVERSEAS SALES DIVISION
2-1-1, Yaesu, Chuo-ku, Tokyo, 104-8486, Japan
TEL: 3-3275-4909 FAX: 3-3275-4969
■ YANMAR (AMAGASAKI PLANT)
1-1-1, Nagasu Higashidori, Amagasaki,
Hyogo, 660-8585, Japan
■ QUALITY ASSURANCE DEPT.
TEL: 6-6489-8017 FAX: 6-6488-4009

■ YANMAR ENGINEERING CO., LTD.
■ YANMAR ENGINEERING (HEAD OFFICE)
1-1-1, Nagasu Higashidori, Amagasaki,
Hyogo, 660-8585, Japan
TEL: 6-6489-8045 FAX: 6-6489-8075
WEB: www.yanmar.co.jp/ye/
■ OVERSEAS ENGINEERING DIVISION.
TEL: 6-6489-8048 FAX: 6-6481-6101

CHINA COUNTRY CODE * 86 *

E YANMAR ENGINE (SHANGHAI) CO., LTD.
10F, E-Block POLY PLAZA, No.18 Dongfang Road,
Pudong Shanghai, China P.R.C 200120
TEL: 21-6880-5090 FAX: 21-6880-8090
WEB: yanmar.com/cn/

■ GOLTENS SHANGHAI CO., LTD
Block No.5, No.533 Yuanzhong Road,
Nanhui Industrial Zone, Nanhui District, Shanghai, China
TEL: 21-58186628 FAX: 021-58186633
E-mail: shanghai@goltens.com

■ TIANJIN PORT TUG-BOAT & LIGHTER COMPANY / YANMAR ENGINE SERVICE CENTER
No.383 Yongtai Road, Tanggu District, Tianjin, China
TEL: 22-2570-7510 FAX: 22-2570-7510

■ DALIAN WANFANG MARINE TECHNOLOGY CO., LTD
No.40 Aixian Street, Qixianling,
Dalian High-Tech Industrial Zone, China
TEL: 411-84799000 FAX: 411-84795678
E-mail: wf@china-wf.com

■ ZHOUSHAN IMC-YY SHIPYARD & ENGINEERING CO., LTD.
28, Mazhi West Road, Shenjiamen, Putuo,
Zhoushan, China, 316100
TEL: 580-3690896/3690518/3690577/3690882
FAX: 580-3690580
WEB: www.imc-yy.com

INDIA COUNTRY CODE * 91 *

C YANMAR INDIA PRIVATE LIMITED
707 Real Tech Park, Sector 30/A, Vashi, Navi Mumbai,
Pin: 400 703, Maharashtra
TEL: +91-22-2781 0975

■ IND-AUST MARITIME PVT LTD.
C-6/2, T.T.C. M.I.D.C. Pawane, Turbhe, Navi Mumbai
400 705, Maharashtra, India
TEL: 22-2763-3178 FAX: 22-2789-2529

SINGAPORE COUNTRY CODE * 65 *

D YANMAR ASIA (SINGAPORE) CORP. PTE. LTD. (YASC)
4 Tuas Lane, Singapore 638613
TEL: 6595-4200 FAX: 6862-5189
WEB: yanmar.com/sg/

■ CHONG LEE LEONG SENG CO., (PTE) LTD.
23 Tuas Avenue 2, Singapore 639454
TEL: 6264-2922 FAX: 6861-8785

HONG KONG COUNTRY CODE * 852 *

C YANMAR ENGINEERING (HK) CO., LTD.
Room J, 23/F, King Palace Plaza 55
King Yip Street Kwun Tong Kow loon Hong Kong
TEL: 2833-9032 FAX: 2904-7783
E-MAIL: yanmarhk@yanmarhk.com.hk

■ CISTAR TECH HK LTD
3/F., 81 Hing Wah Street West Lai Chi Kok, Kowloon
Hong Kong, China
TEL: 2775-0161 FAX: 2772-6054
E-MAIL: info@cistarhk.com
WEB: www.cistarhk.com

PHILIPPINES COUNTRY CODE * 63 *

d YANMAR ENGINEERING CO., LTD. PHILIPPINES LIAISON OFFICE
Bldg 3, Berthaphil South, Bayanhan St.,
Jose Abad Santos Avenue,
Clark Freeport Zone 2023 Pampanga Philippines.
TEL: 45-499-1541/1542 FAX: 45-499-1543

■ SEAPOWERS TRADING & INDUSTRIAL SERVICES
316-A Mamatid Cabuyao, Laguna, Philippines
TEL: 917-500-3017 FAX: 49-502-0765
E-MAIL: seapowers@pltdsl.net

TAIWAN COUNTRY CODE * 886 *

E YANMAR ENGINEERING CO., LTD. TAIWAN BRANCH
No.56, Yungangjung 2 Rd., Chienchen Dist, Kaohsiung, Taiwan
TEL: 7-815-4198 FAX: 7-815-3280
E-MAIL: yanmar-service@umail.hinet.net

f YANMAR ENGINEERING CO., LTD. TAIWAN BRANCH TAIPEI SATELLITE OFFICE
R/M8, 9F, No.142, Sec3, Minquan E. Rd., Songshan Dist,
Taipei City 104, Taiwan R.O.C.
TEL: 2-8712-3150/3151 FAX: 2-8712-3107
E-MAIL: yanmar-service@umail.hinet.net

■ YEE FOO MARINE INDUSTRIAL CO., LTD.
6F-3, No.369 Fusing North Road, Taipei, Taiwan R.O.C. 105
TEL: 2-8712-0848 FAX: 2-8712-0797

■ SEIKOH CO., LTD.
No.56, Yungang Jung 2 Rd., Chien Chen Dist, Kaohsiung, Taiwan
TEL: 7-831-2303 FAX: 7-882-3911

KOREA COUNTRY CODE * 82 *

■ HWA ILL TRADING CO., LTD.
#93, 2-GA, Namhang Dong, Young Do-Ku, Busan, Korea
TEL: 51-412-6385 FAX: 51-414-8752
E-MAIL: hwaill@hwaill.co.kr

■ PLUS SERVICE CO.
Room 3806, Centum Leaders Mark B/D, 1514 U-Dong,
Haeundae-gu, Busan, 612-889, Korea
TEL: 51-745-8200-1 FAX: 51-745-8203
E-MAIL: plusbusan@hanafos.com

■ CHIBA MARINE KOREA CO., LTD.
1-90, Chunghak-Dong, Yeongdo-gu, Busan, Korea
TEL: 51-418-8998 FAX: 51-418-5880
E-MAIL: chibako@korea.com

MALAYSIA COUNTRY CODE * 60 *

■ PANSAR COMPANY., SDN BHD
Wisma Pansar 23-27 Workshop Road 96007
Sibu Sarawak, Malaysia
TEL: 84-333366 FAX: 84-314555

■ CHONG LEE LEONG SENG ENTERPRISE SDN BHD
Lot 530, Persiaran Subang Permai Sg. Penaga
Industrial Park, USJ 1 47500
Subang Jaya Selangor Darul Ehsan, Malaysia
TEL: 3-5632-1577 FAX: 3-5632-3126

THAILAND COUNTRY CODE * 66 *

■ STAR MARINE ENGINEERING CO., LTD
2 / 5 M11 Tumbol Bangphueng Phrapradaeng,
Samutprakarn, Thailand 10130
TEL: 2-816-8001 FAX: 2-463-2616
E-MAIL: info@starmarineeng.com

MYANMAR COUNTRY CODE * 95 *

■ UMG MYANMAR
No.589, Bo Aung Kyaw Street,
Yangon-Pathein Highway Road,
Hlaing Thar Yar Township, Yangon, Myanmar
TEL: 1-645178 FAX: 1-645211
E-MAIL: sale-div@winstrategic.com.mm

■ UNITED ENGINEERING CO., LTD
UE Office Complex
UE Building : Corner of Wayzayantar & Yadanar Rd,
Thingangyun Tsp, Yangon, Myanmar
TEL: 1-571321 FAX: 1-571288
WEB: www.united-engineering.net

INDONESIA COUNTRY CODE * 62 *

■ YANMAR JAKARTA SERVICE CENTER C/O P.T. PIONEER
Jalan Ir. H. Juanda, No.40-42 Jakarta 10120, Indonesia
(P.O. Box 2502-Jakarta 10025)
TEL: 21-385-8526 FAX: 21-384-8995

■ P.T. PIONEER
Jalan Ir. H. Juanda, No.40-42 Jakarta 10120, Indonesia
(P.O. Box 2502-Jakarta 10025)
TEL: 21-344-8486 FAX: 21-384-8995

NORTH AMERICA

U.S.A. COUNTRY CODE * 1 *

E YANMAR AMERICA CORP. (YA) GEORGIA OFFICE
101 International Parkway, Adairsville, GA 30103, U.S.A.
TEL: 770-877-9894 FAX: 770-877-9009
WEB: yanmar.com/global/

f YANMAR AMERICA CORPORATION. NEW YORK BRANCH
Parker Plaza 16F, 400
Kelby Street, Fort Lee, NJ 07024 U.S.A.
TEL: 201-592-8500

■ MARINE TURBO & DIESEL INC.
1090 7th Street Richmond, Ca 94801, U.S.A.
TEL: 510-236-3525 FAX: 519-236-3576

■ GOLTENS NEW YORK CORP.
160 Van Brunt Street, Brooklyn, NY 11231, U.S.A.
TEL: 718-855-7200 FAX: 718-802-1147

■ GOLTENS MIAMI CO. INC.
2323 N.E.Miami Court - Miami, Florida 33137 U.S.A.
TEL: 305-576-4410 FAX: 305-576-3827

■ TRANSMARINE PROPULSION SYSTEM, INC
5434 West Crenshaw Tampa, Florida, 33634 U.S.A.
TEL: 813-830-9180 FAX: 813-830-9181

■ UNITED WORLD ENTERPRISE, INC
6310 Winfree Houston, Texas 77087 U.S.A.
TEL: 713-641-1915 FAX: 713-641-2717

SOUTH AMERICA

BRAZIL COUNTRY CODE * 55 *

■ METALOCK BRASIL LTDA
Rua Visconde do Rio Branco 20/26,
11013-030, Santos, SP, Brazil
TEL: 13-3226-4686 FAX: 13-3226-4680
E-MAIL: santos@metalock.com.br
WEB: www.metalock.com.br

■ NAPROSERVICE OFFSHORE ESTALEIROS DO BRASIL LTDA
Rua Del. Waldir Guilherme, 32 - Ilha da Conceicao - Niteroi
RJ - Brasil - Zip: 24050-170
TEL: 21-2109-1800 FAX: 21-2109-1812/1814
E-MAIL: napro@naproservice.com.br
WEB: www.naproservice.com.br

